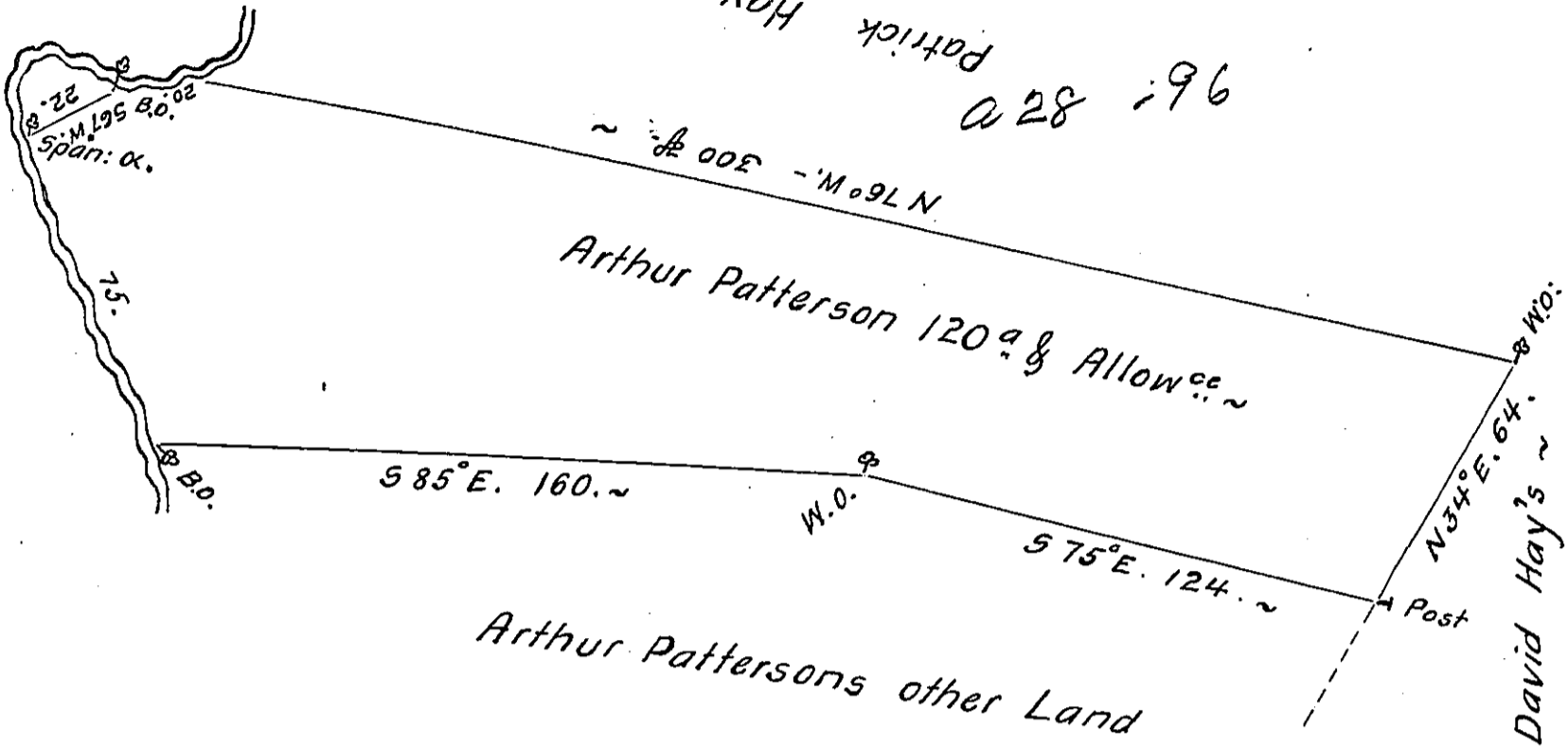


James Mease
Down Chickasawlingo



C155-157

The above is a Draught of One Hundred and Twenty Acres of
 Land in Rapho TP- Lancaster County Survey'd to Arthur Patterson ^{ye} 22^d
 Day of February 1755 by William Galbraith late Deputy Surveyor ^{in pursuance} and
 of a warrant bearing Date the 27th ^{December} 1754
 Draughted from his Field Book 13th January 1764. ~

W Bartrem Galbraith

IN TESTIMONY that the above is a copy of the original remaining on file in
 the Department of Internal Affairs of Pennsylvania, made
 conformably to an Act of Assembly approved the 16th day of
 February, 1833, I have hereunto set my Hand and caused
 the Seal of said Department to be affixed at Harrisburg,
 this twelfth day of April 1906

Geo D Brown
 Secretary of Internal Affairs.